



# MONTHLY MEMBERSHIP PROGRESS REPORT

District 306 A1

Results as of: 1/31/2015

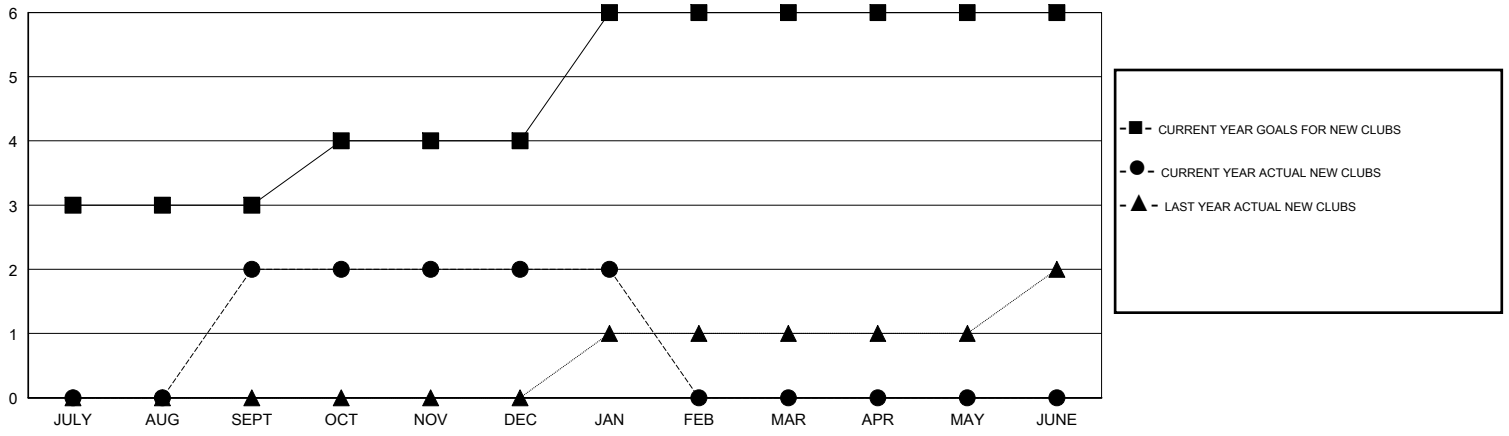
GMT: Mahesh Pasqual

LOCATION REP OF SRI LANKA

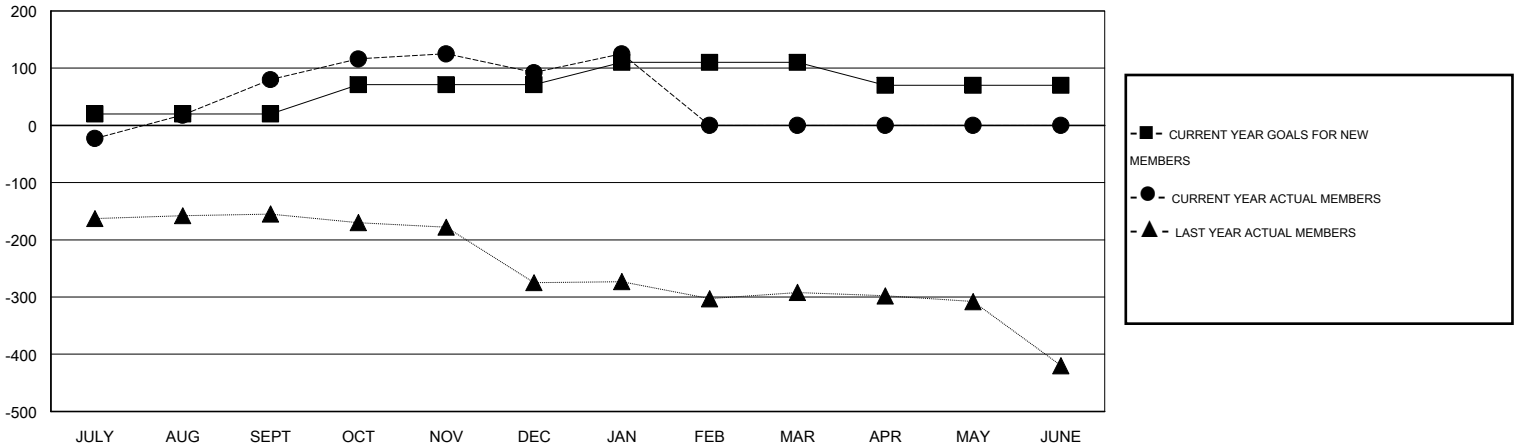
GMT CA 6

Clubs					Members				
RESULTS FOR 2014-2015					RESULTS FOR 2014-2015				
QUARTER	NEW CLUB GOAL	NEW CLUBS	DROPPED CLUBS	NET GAIN/LOSS	QUARTER	NEW MEMBER GOAL	CHARTER AND NEW MEMBERS ADDED	DROPPED MEMBERS	NET GAIN/LOSS
JULY/AUG/SEPT	3	2	0	2	JULY/AUG/SEPT	20	127	47	80
OCT/NOV/DEC	1	0	0	0	OCT/NOV/DEC	51	58	46	12
JAN/FEB/MAR	2	0	0	0	JAN/FEB/MAR	39	49	16	33
APR/MAY/JUNE	0	0	0	0	APR/MAY/JUNE	-40	0	0	0

GOALS AND ACTUAL NEW CLUBS CUMULATIVE



GOALS AND ACTUAL MEMBERS CUMULATIVE



DROPPED CLUBS: 0	50 CLUBS OF 72 ADDED 1 OR MORE NEW MEMBERS	<b>GENDER DISTRIBUTION</b>
		MALE 1,218 (77.24%)
		FEMALE 359 (22.76%)
<b>DROPPED MEMBERS</b>	<a href="#">CLICK HERE FOR HEALTH ASSESSMENT DATA</a>	<b>FAMILY UNIT MEMBERS</b> 519
DECEASED 5		HEAD OF HOUSEHOLD 245
CLUB CANCELLED 0		NON-HEAD OF HOUSEHOLD 274
OTHER 104		
<b>TOTAL 109</b>		